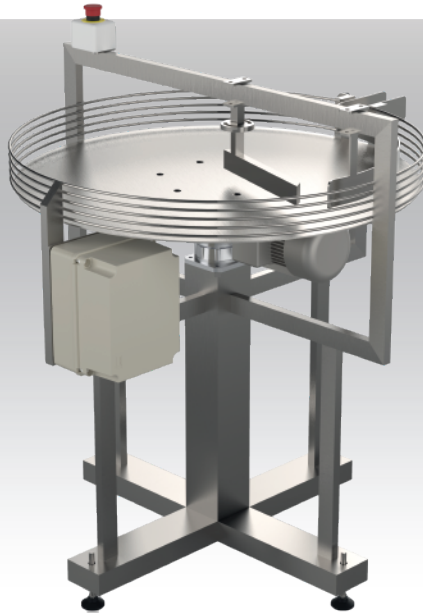


## THE ADVANTAGES OF **ROTARY ACC. TABLE**

The Rotary Accumulation Table is the ideal solution to optimize the end of production lines, particularly in accumulation, loading, or unloading phases of various packaging formats.





# ROTARY ACC. TABLE

They ensure the continuity of the flow of packages, both incoming and outgoing, towards packaging or bottling machines.

They facilitate the boxing process of products, reducing waiting times and ensuring a continuous and efficient production flow.

Designed to be versatile and robust, the tables are entirely made of high-quality stainless steel, making them suitable for various industrial sectors, including food, pharmaceutical, chemical, and cosmetic.

## TECHNICAL FEATURES

Easily integrable into different lines

Configurable disk diameter

Compact design

Stainless steel structure

Suitable for multiple sectors

Adjustable product diverters

## ADDITIONAL FEATURES

Speed controller

Stainless steel wheels with brakes

Custom-sized disks

Corrosion resistance

Adjustable height

Inverter for rotation control

## SYSTEM ADVANTAGES

- ✓ Maximum versatility and safety
- ✓ Precise filling
- ✓ Energy cost reduction
- ✓ Integration with production lines
- ✓ Maximum customization

Our Rotary Accumulation Tables are ideal solutions for optimizing the end of the production line.

## MAIN FEATURES

Thanks to the various construction solutions of the product diverters, to the regulation of rotation speed, rotation direction management, and height adjustment, it is possible to further improve the functionality and efficiency of the lines, ensuring the flexibility necessary to adapt to different production needs.